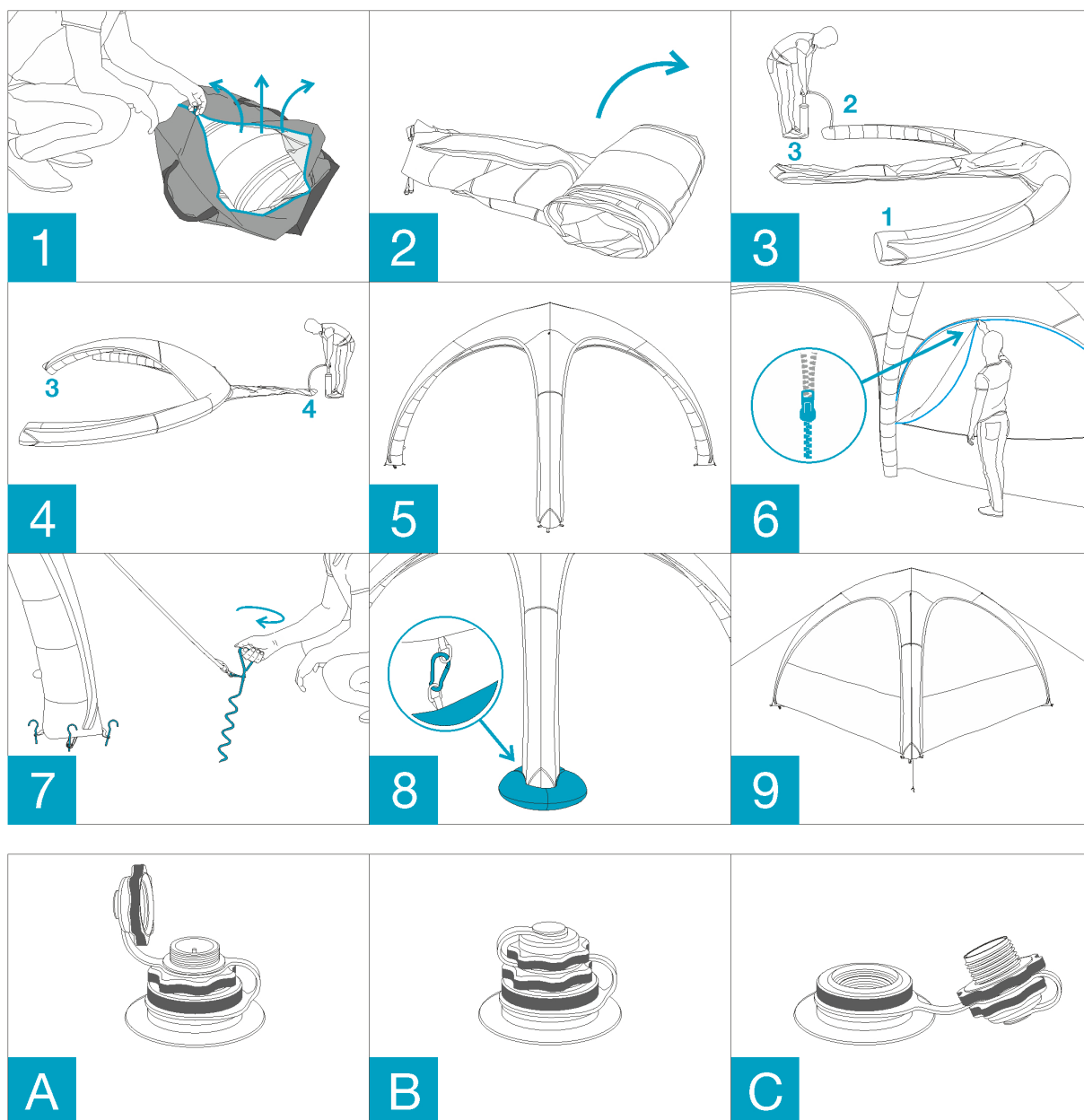


PNEUMATIC TENTS FALCO - MANUAL



WARNING!

The inflatable tent is not intended for use during strong winds, snowstorms, hail, storms etc.

Do not leave the tent unattended.

You should take extra care of the tent and anchoring the tent to the ground. Do not block the safety valves located inside the tent in the upper parts of the legs under any circumstances.

INSTALATION

1. Pull out the tent from the bag and place it on a level surface
2. Expand the tent, separate legs and prepare them for pumping (valve ready to pump shown in Fig. A).
3. Inflate 2 opposite legs.
4. Inflate 2 remaining legs of the tent.
5. After inflating each leg close the valve as in Fig. B.
6. Fasten the wall zippers.
7. Anchor the legs of the tent to the ground by steel pins through steel loops. Using the snap hooks fasten the pull cords to the steel loops in the upper part of the legs. Fasten the ends of the cord with snap hooks to screw pins. Pull the cable and tighten the pins into the ground.
8. Using the hooks fasten the sand weights to the steel loops in the lower parts of the legs (optional).
9. The tent is now anchored to resist wind gusts of up to 38 Km/h.

DISMANTLING

1. First unhook the walls, then peel off the pull cords and remove the pins. Pull the pins at the feet of the tent.
2. Unscrew the valve and let the air out (the valve ready for deflation is shown in Fig. C).
3. Place the deflated tent feet on one another. Let the rest of the air flow from the top of the tent out by rolling it towards the feet.